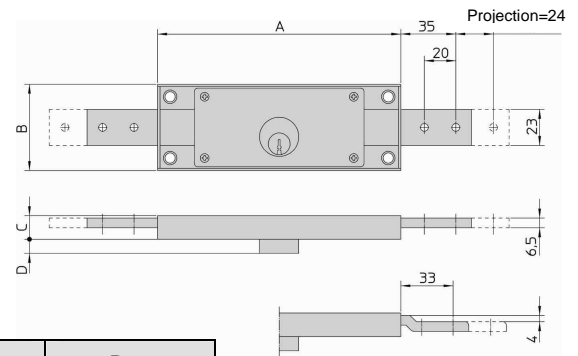


8230 SERIES GALVANIZED FINISH - SUPPLIED WITH SYMMETRIC PROFILE KEYS - WITH LOOSE PINS

The reinforced deadbolt makes the roller shutter more resistant to attack. The lock is therefore ideal for installation on motorized roller shutter.

- **Structure and internal components:** galvanized steel.
- **Steel deadbolt** 2 mm thick, folded back on itself to give an **overall thickness of 6 mm.**
- **Solid brass cylinder** (with mushroom brass counterpins, pick-resistant):
 - √ 9 mm cylinder projection for thick and heavy roller shutters;
 - √ 6 mm cylinder projection for less thick and lighter roller shutters.
- **On request:** bended deadbolt and/or riveted pins only for series with 9 mm. cylinder projection.
- **Keys:** supplied with 2 nickel-plated brass symmetric profile keys.
- **Easy installation and interchangeable** with most common roller shutter locks available on the market.
- **Supplied with:** loose pins.
- **All special execution are possible for the cylinder.**



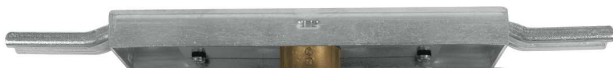
WITH 9 mm CYLINDER PROJECTION (D) - 8230.9 Series

	ITEM No.	Dimensions mm A x B	Case height mm C	Keys Item No.	Unit weight g	Pcs. per pack No.
Central	8231.9	155 x 55	15	080	490	2
Right side	8232.9	155 x 55	15	080	450	2
Left side	8233.9	155 x 55	15	080	450	2
Pair	8232/8233.9	155 x 55	15	080	900	1

WITH 6 mm CYLINDER PROJECTION - 8230.6 Series

	ITEM No.	Dimensions mm A x B	Case height mm C	Keys Item No.	Unit weight g	Pcs. per pack No.
Central	8231.6	155 x 55	15	080	470	2
Pair	8232/8233.6	155 x 55	15	080	860	1

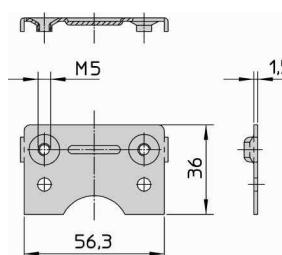
ON REQUEST:



(WITH EXTRA CHARGE)

Bended deadbolts with loose pins (.84)

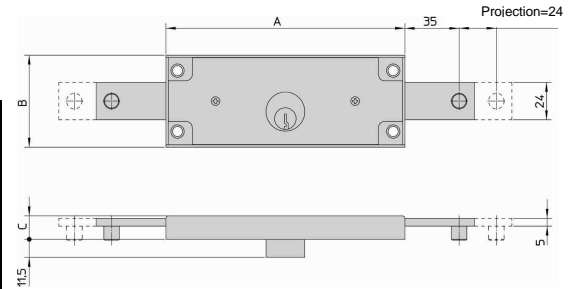
For special versions, add the version code after the item code.
E.g. 8231.9.84= Central lock with 9 mm cylinder projection, bended deadbolts and loose pins.



	ITEM NO.	Description
FOR SERIES 8230.6-8230.90	9981	Pair of fixing plates

8200 SERIES GALVANIZED FINISH – SUPPLIED WITH 2 OUTSIDE + 1 INSIDE KEYS – WITH RIVETED PINS

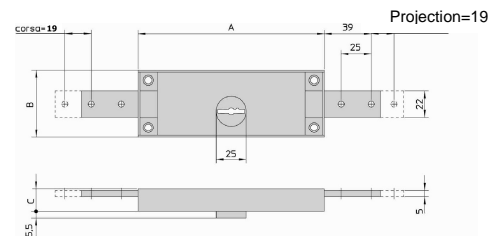
- **Structure and internal components:** galvanized steel.
- **Steel deadbolt** consisting of two 2,5 mm thick laminated plate, for a total thickness of 5 mm – 24 mm projection.
- **Cylinder:** solid brass projection 11,5 mm. Mushroom brass counterpins, pick-resistant.
- **Keys:** supplied with 2 nickel-plated brass outside keys + 1 satin brass inside key Viro profile.
- **Supplied with:** loose pins.
- **Numerous KD bitting available.**
- **All special executions are possible for the cylinder.**



	ITEM No.	Dimensions mm	Case height mm	Cylinder Item	Unit weight	Pcs. per pack No.
		A x B	C	No.	g	
Central	8201	154 x 59	15	735	610	1
Pair	8202/8203	154 x 59	15	735	1070	1
Vertical	8211.1	154 x 59	15	735	575	1

2200 SERIES GALVANIZED FINISH – SUPPLIED WITH DOUBLE BIT KEYS – WITH LOOSE PINS

- **Structure and internal components:** galvanized steel.
- **Steel deadbolt** 5 mm thick - 19 mm projection.
- **6 gorges, double throw lock projection 5,5 mm.**
- **Keys:** supplied with 2 nickel-plated brass double bit keys with octagonal head.
- **Supplied with:** loose pins.

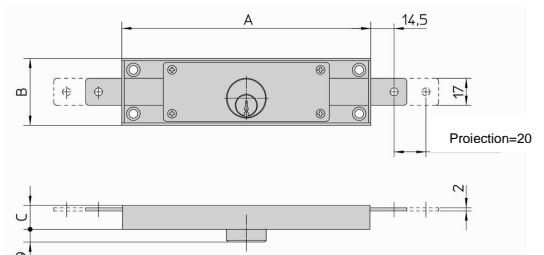


	ITEM No.	Dimensions mm	Case height mm	Keys Item	Unit weight	Pcs. per pack No.
		A x B	C	No.	g	
Central	2201	156 x 56	18,5	1.079	690	3
Right side	2202	156 x 56	18,5	1.079	640	6
Left side	2203	156 x 56	18,5	1.079	640	6
Pair	2202/2203	156 x 56	18,5	1.079	1280	3

5803020205015 – 06/2011

8241 series FOR SMALL ROLLER SHUTTER – GALVANIZED FINISH SUPPLIED WITH SYMMETRIC PROFILE KEYS – WITH LOOSE PINS

- **Structure and internal components:** galvanized steel.
- **Easy installation.**
- **Steel deadbolt** 2 mm thick - 20 mm projection.
- **Solid brass cylinder projection 9 mm.** Mushroom brass counterpins, pick-resistant.
- **Keys:** supplied with 2 nickel-plated brass symmetric profile keys.
- **Supplied with:** loose pins.
- **All special executions are possible for the cylinder.**



	ITEM No.	Dimensions mm	Case height mm	Keys Item	Unit weight	Pcs. per pack No.
		A x B	C	No.	g	
Central	8241	156 x 42	15	080	390	1