

STRUCTURAL FEATURES

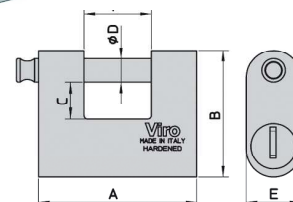
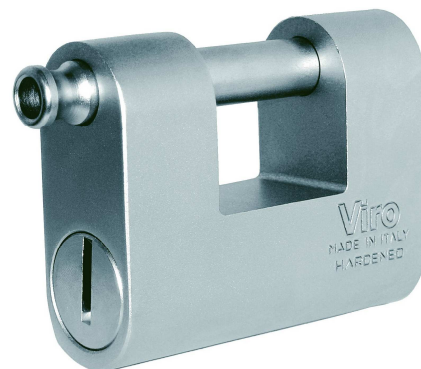
- **One-piece body**, special case-hardened and tempered steel, "Niploy Process" chemical nickel-plating for maximum corrosion resistance.
- **Safety cylinder** protected by a thick anti-drill rotating case-hardened and tempered special steel plate.
- **Rotating lock-bolt**: case-hardened, tempered and nickel-plated with "Niploy Process" system (Ø 13 mm for "Monolith", "EuroMonolith", "Thor" and "EuroThor"; Ø 10 mm for "Totem").
- **Ball type locking mechanism**, key retaining.

MONOLITH AND EUROMONOLITH

"Monolith" and "Euromonolith" form part of the new generation of very secure and elegant padlocks. The one-piece body, the lock-bolt and the anti-drill plate of the cylinder are treated with the "NIPLOY PROCESS", an innovative chemical nickel-plating process which ensure a high corrosion-resistant level.

"Monolith" and "Euromonolith" guarantee maximum resistance to attack.

- **Mechanism:**
 - ✓ first set of pins, counterpins and springs in inox stainless steel, tempered;
 - ✓ other pins and counterpins in brass;
 - ✓ pin springs and padlock springs in inox stainless steel;
 - ✓ "mushroom" counterpins, anti-picking ("Monolith").
- **High resistance to attack and corrosion** (suitable for roller shutters, gates hasps and double gates, chains etc.).
- **"Programmed breakage"** pull-resistant inserted head.
- **Keys:** supplied with 2 brass-nickel plated keys for "Monolith", with Viro Top Security Profile, 2 flat and reversible keys for "EuroMonolith".
- **Viro Top Security profile**, extremely precise to code: special executions allowed even if product has been purchased since many years ("Monolith"); flat and reversible keys supplied into one sealed envelope with property card for personal identification ("EuroMonolith").
For **Monolith**: versions available with patented profile keys (form trademark) which can only be duplicated by Viro (.PB profile) or versions which can be duplicated only by Viro Authorized Centers (.PV profile).
- **The interchangeable cylinder allows easily all master key systems.**
- **All special executions are possible for "Monolith"; standard KA for "EuroMonolith".**



MONOLITH

ITEM No.	Body dimensions mm A x B x E	Horizontal and vertical clearance mm F x C	Lock-bolt diameter mm D	Keys Item No.	Unit weight g	Pcs. per pack No.
4143	78 x 62 x 30	28 x 12,5	13	039	850	1
4144	87 x 70 x 30	37 x 20,5	13	039	1015	1



SPARE CYLINDER with accessories for cylinder replacement	ITEM.No.
	4743

For versions with patented profile keys the item code should be followed by: **.PB** or **.PV**

EUROMONOLITH 2 flat and reversible keys supplied into one sealed envelope with property card for personal identification.

ITEM No.	Body dimensions mm A x B x E	Horizontal and vertical clearance mm F x C	Lock-bolt diameter mm D	Keys Item No.	Unit weight g	Pcs. per pack No.
4153	78 x 62 x 30	28 x 12,5	13	063.A	880	1
4154	87 x 70 x 30	37 x 20,5	13	063.A	1035	1

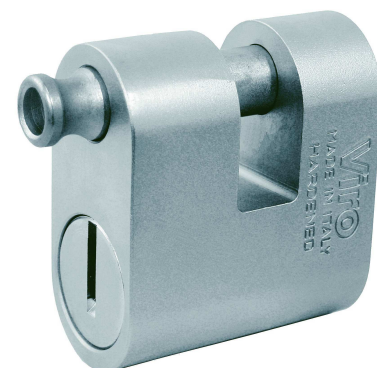


SPARE CYLINDER with accessories for cylinder replacement	ITEM.No.
	4753

For versions with patented profile keys the item code should be followed by: **.PB** or **.PV**

THOR AND EUROTHOR

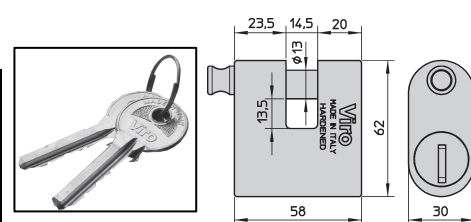
- First set of pins and counterpins in inox stainless steel, tempered and nickel plated; other pins and counterpins in brass.
- Pin springs and padlock springs in inox stainless steel.
- "Mushroom" pins and counterpins, anti-picking ("Thor").
- **Cylinder** easy to remove and to re-code.
- **High** resistance to attack and corrosion.
- **"Programmed breakage"** pull-resistant inserted head.
- **Keys:** supplied with 2 brass-nickel plated keys for "Thor", 2 flat and reversible keys for "EuroThor". Versions available with patented profile keys (form trademark) which can only be duplicated by Viro (.PB profile) or versions which can be duplicated only by Viro Authorized Centers (.PV profile).
- flat and reversible keys supplied separately in one sealed envelope with property card for personal identification ("EuroThor").
- For **Thor** are possible versions with patented profile key
- **Options:** you can get chain diam. 13 mm. (length 120-150-180 cm) protected by black textile sheath reducing overall size.
- **All special executions are possible for "Thor"; standard KA for "EuroThor".**



THOR 2 flat and reversible keys supplied into one sealed envelope with property card for personal identification.

ITEM No.	Body dimensions mm	Horizontal and vertical clearance mm C X F	Lock-bolt diameter mm D	Keys Item No.	Unit weight g	Pcs. per pack No.
4145	58 x 62 x 30	14,5 x 13,5	13	039	665	6

SPARE CYLINDER with accessories for cylinder replacement	ITEM.No.
	4743



EUROTHOR 2 flat and reversible keys supplied into one sealed envelope with property card for personal identification.

ITEM No.	Body dimensions mm	Horizontal and vertical clearance mm	Lock-bolt diameter mm D	Keys Item No.	Unit weight g	Pcs. per pack No.
4155	58 x 62 x 30	14,5 x 13,5	13	063.A	695	6

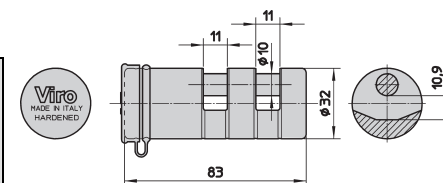


SPARE CYLINDER with accessories for cylinder replacement	ITEM.No.
	4753

TOTEM

- **Mechanism** with 5.500 possible combinations:
 - ✓ brass pins and counterpins;
 - ✓ inox stainless steel pin springs.
- **Cylinder:**
 - ✓ fully and simply removable for a new chain application or for the lock-bolt replacement ;
 - ✓ partly removable to take off the external link with respect to the key side;
 - ✓ with locked padlock, cylinder is on anti-pull position and completely body fitted; lock protected by a grey rubber dust-proof cap.
- **High** resistance to attack and corrosion.
- **Lock-bolt** simply removable with fully open cylinder.
- **Keys:** supplied with 2 brass nickel-plated keys; numbering on request to ensure easy product tracing.
- **Options:** you can get chain diam. 10 mm (length 90-120-150 cm) protected by black textile sheath reducing overall sizes.
- **All special executions are possible.**

ITEM No.	Body dimensions mm	Horizontal and vertical clearance mm	Lock-bolt diameter mm D	Keys Item No.	Unit weight g	Pcs. per pack No.
4150	83 x 32	10,9 x 11	10	1.033	420	8



58030260205015 - 06/2011