

## THUMB TURN CYLINDERS 700 SERIES



ITEM No.	Total length	Cam position	Pins	Keys Item	Unit weight	Pcs. per pack
	mm	mm	No.	No.	g	No.
740.1	60	30 - 30	5	015	280	1

## HALF CYLINDERS 700 SERIES



ITEM No.	Total length	Cam position	Pins	Keys Item	Unit weight	Pcs. per pack
	mm	mm	No.	No.	g	No.
1.772	40	30 - 10	5	015	160	1
772	41	33 - 8	5	015	160	1

## PAIR OF CYLINDERS (internal + external) for mechanic and electric rim door locks. Supplied with 3 keys



ITEM No.	Length	Diameter	Pins	Keys Item	Unit weight	Pcs. per pack
	mm	mm	No.	No.	g	No.
791/794	15 / 53	25	5	015	240	6

## OVAL CYLINDERS



ITEM No.	Total length	Cam position	Pins	Keys Item	Unit weight	Pcs. per pack
	mm	mm	No.	No.	g	No.
* 745	54	27 - 27	5	013	155	1

## CAM LOCKS



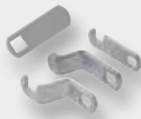
ITEM No.	Length	Diameter	Pins	Keys Item	Unit weight	Pcs. per pack
	mm	mm	No.	No.	g	No.
<b>1050 SERIES</b> - Single version. Key removable in vertical position. 180° turn. Standard A/O cam. Reference pin for key removal.						
* 1053	21	20	4	013	94	6
* 1054	26	20	4	013	105	6
* 1055	31	20	4	013	115	6
* 1056	35	20	4	013	125	6

**N.B.** Add the cam code after the item code to have universal locks with cam

## GALVANIZED STEEL CAMS

### FULL CAMS

ITEM No.	Type of cam	Pcs. per pack No.
090	A/0 - straight	12
092	A/10 - bended	12
093	A/15 - bended	12



### HOOK-SHAPED CAMS

ITEM No.	Type of cam	Pcs. per pack No.
094	B/0 - straight	12
096	B/10 - bended	12
097	B/15 - bended	12

**Viro**®

Via Garibaldi, 4  
40069 Zola Predosa (Bologna) - ITALY  
Tel. + 39 051 6176511 - Fax + 39 051 755079  
www.viro.it - viro@viro.it

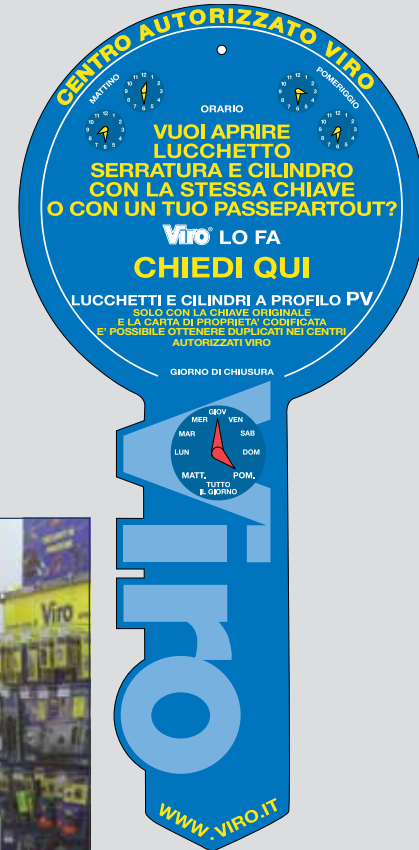
ISO 9001  
BUREAU VERITAS  
Certification



Cod. 58202080211015 -01/2012 VIRO S.p.A. reserves the right to modify product specifications without prior notice.



**SPECIAL  
PV and PB  
PATENTED  
PROFILES**



**Viro**®

Versions available with patented profile keys (form trademark) which can only be duplicated by Viro Authorized Centres (.PV profile).

To request one or more duplicates:

- go to a Viro Authorized Centre for key duplication;
- show a key and the coded ownership card that was provided in a sealed envelope with the keys;
- show your ID;
- the Authorized Centre personnel will duplicate the keys and give them to the owner.



Example of coded ownership card to allow duplication of Viro patented profile keys (form trademark).

Versions available with patented profile keys (form trademark) which can only be duplicated by Viro (.PB profile).

To request one or more duplicates:

- go to the shop where the product was purchased;
- show a key and the coded ownership card that was provided in a sealed envelope with the keys;
- the shop personnel will send a fax to Viro with a photocopy of the ownership card (keeping the card until the duplicates arrive) and the name and details of the user, specifying urgent delivery if necessary;
- Viro will duplicate the keys and send them to the shop in a sealed envelope;
- the shop will contact the user and hand over the sealed envelope and return the ownership card.

**Please note:** The item code should be followed by: **.PV** or **.PB** to require items with patented profile keys

## CYLINDRICAL PADLOCKS



ITEM No.	Body dimensions	Shackle clearance	Shackle diameter	Keys Item	Unit weight	Pcs. per pack
	mm	mm	mm	No.	g	No.
105	80 x 36	40-38	14	015	775	1

## "MONOLITH" PADLOCKS

ITEM No.	Body dimensions	Horizontal and vertical clearance	Lock-bolt diameter	Keys Item	Unit weight	Pcs. per pack
	mm	mm	mm	No.	g	No.
4143	78 x 62 x 30	28 x 12,5	13	039	850	1
4144	87 x 70 x 30	37 x 20,5	13	039	1015	1
4743	SPARE CYLINDER with accessory for cylinder replacement					



## RECTANGULAR PADLOCKS



ITEM No.	Body dimensions	Shackle clearance	Shackle diameter	Keys Item	Unit weight	Pcs. per pack
	mm	mm	mm	No.	g	No.
302	40 x 32 x 15	20-23	6	013	165	6
303	50 x 40 x 17	28-30	8	015	290	1
304	60 x 46 x 20	35-35	10	015	460	1
305	70 x 51 x 23	42-38	12	015	695	1
312	40 x 32 x 15	40-23	6	013	170	6
* 312.64	40 x 32 x 15	64-23	6	013	190	6
* 312.90	40 x 32 x 15	90-23	6	013	200	6
* 313	50 x 40 x 17	48-30	8	015	315	1
* 313.64	50 x 40 x 17	64-30	8	015	325	1
* 313.90	50 x 40 x 17	90-30	8	015	345	1
* 314.64	60 x 46 x 20	64-35	10	015	500	1
* 314.90	60 x 46 x 20	90-35	10	015	540	1
* 315.90	71 x 51 x 23	90-38	12	015	765	1

## "THOR" PADLOCK FOR CHAINS

ITEM No.	Body dimensions	Horizontal and vertical clearance	Lock-bolt diameter	Keys Item	Unit weight	Pcs. per pack
	mm	mm	mm	No.	g	No.
4145	58 x 62 x 30	14,5 x 13,5	13	039	665	1
4743	SPARE CYLINDER with accessory for cylinder replacement					



All special executions are possible: standard, to sample key, or in sets (KD guaranteed bitting different, keyed alike KA, master keys MK). Items with the same key (see colour of key code) can be part of the same special system.

## "MARINE" PADLOCKS



ITEM No.	Body dimensions	Shackle clearance	Shackle diameter	Keys Item	Unit weight	Pcs. per pack
	mm	mm	mm	No.	g	No.
373	40 x 32 x 15	20-23	6	013	170	6
375	40 x 32 x 15	40-23	6	013	180	6
* 377	50 x 40 x 17	55-30	8	015	325	1

## "PANZER" ARMOURED PADLOCKS



ITEM No.	Body dimensions	Horizontal and vertical clearance	Lock-bolt diameter	Keys Item	Unit weight	Pcs. per pack
	mm	mm	mm	No.	g	No.
4115	62 x 51 x 23	20 x 10	10	039	390	1
4116	77 x 62 x 29	27 x 12	12	039	645	1
4117	86 x 72 x 29	36 x 20	12	039	760	1
4125	78 x 51 x 23	10 x 10	10	039	545	1
4126	86 x 62 x 29	11,5 x 12	12	039	830	1

## CYLINDERS 700 SERIES

ITEM No.	Total length	Cam position	Pins	Keys Item	Unit weight	Pcs. per pack
	mm	mm	No.	No.	g	No.
700 SERIES						
721	54	27 - 27	4	017	190	1
722	60	27 - 33	4	017	210	1
727	62	31 - 31	5	015	220	1
723	66	33 - 33	5	015	230	1
724	70	27 - 43	4	017	240	1
751.25	70	30 - 40	4	017	240	1
725	74	37 - 37	5	015	255	1
726	80	27 - 53	4	017	275	1
753.30	80	35 - 45	5	015	275	1
753.35	80	40 - 40	5	015	275	1



\* Items can be ordered with .PV or .PB profiles; these will be handled as a special order.